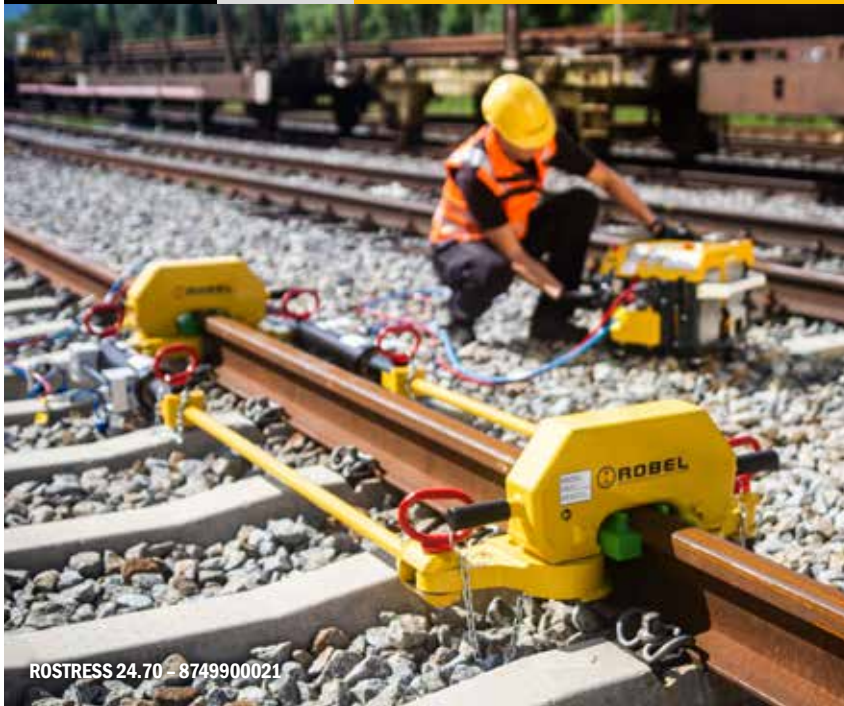


# ROSTRESS 24.70 Hydraulic Rail Stressor



**The modular concept for generating neutral rail stress during welding and stressing work.**

## THE ADVANTAGES. YOUR BENEFITS.

### Flexibility due to configurable modular system

- Standard cylinder, aluminium
- Hollow piston cylinder
- 3<sup>rd</sup> rail module for use at conductor rails

### Fast installation and dismantling independent of clearance gauge

- Safe and easy operation
- Low weight of individual components
- Simple fitting, no lifting gear required
- Can be driven over when fitted in some instances

### Hydraulic power supply

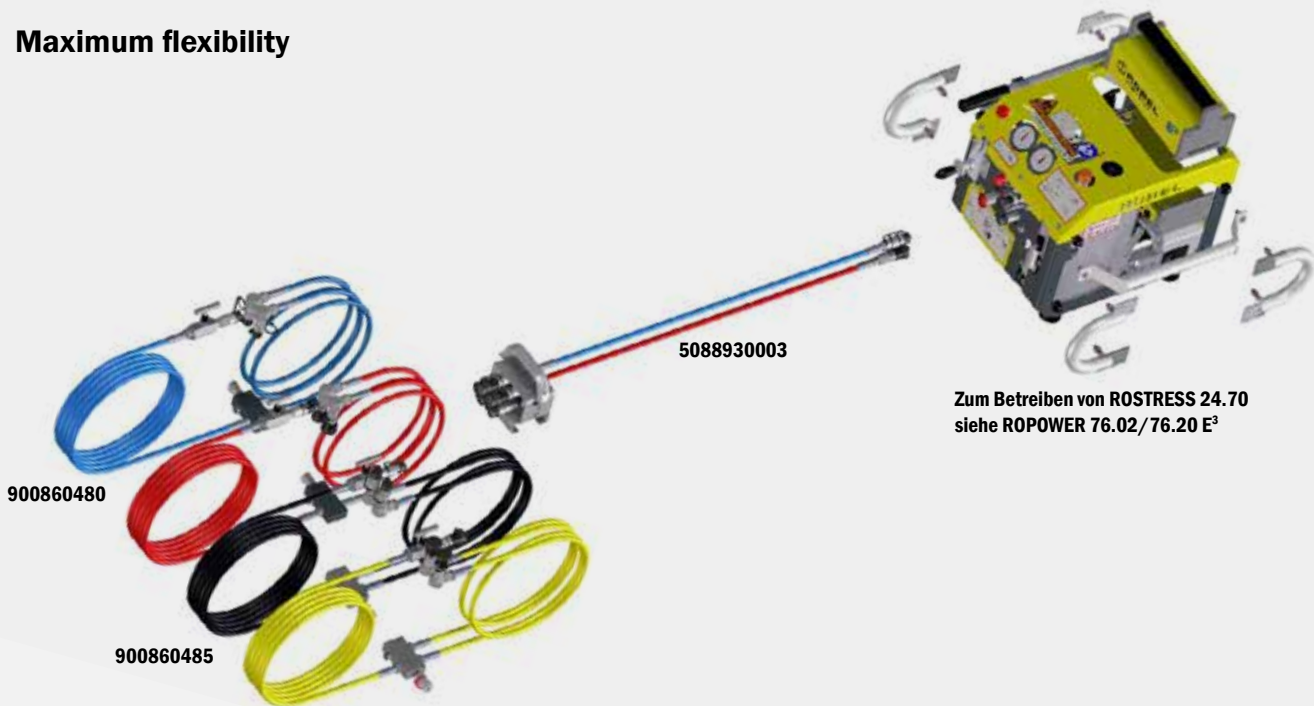
- Two-stage hand pump
- Dual hydraulic power pack 76.02 with combustion engine
- Dual hydraulic power pack 76.20 E<sup>3</sup> with ROBEL battery
- For operation with low-pressure units (e.g. road/rail excavator)

For further information see Power/Lighting.

SPECIFICATION	Standard	Hollow piston cylinder	3 <sup>rd</sup> Rail
Tensile force	700 kN	700 kN	700 kN
Compressive force	400 kN	/	/
Stroke Aluminium	380 mm	200 mm	380 mm
Dimensions (L x W x H) when installed	2650 x 1120 x 375 mm	2500 x 1010 x 375 mm	3070 x 930 x 375 mm
Drawbar system	Standard	Threaded rods	Standard/yoke in work area
Drawbar length	from 1500 mm	2000 mm	Work area 850 mm
Installation independent of clearance gauge	yes	yes	no
Threaded rods and drawbars can be combined in any order			
Weight			
Heaviest individual component	33 kg	33 kg	33 kg
Hand pump	23 kg	23 kg	23 kg
Hydraulic power pack 76.02 Dual	from 44 kg	from 44 kg	from 44 kg
Hydraulic power pack 76.20 E <sup>3</sup> Dual	from 38 kg excl. battery	from 38 kg excl. battery	from 38 kg excl. battery
Battery 800 Wh	6.3 kg	6.3 kg	6.3 kg
Hydraulic power packs optionally with hand pump for emergency operation: +3 kg			
Pressure intensifier	15 kg	15 kg	15 kg

## ACCESSORIES

### Maximum flexibility



900860480

900860485

5088930003

Zum Betreiben von ROSTRESS 24.70  
siehe ROPOWER 76.02/76.20 E<sup>3</sup>

- 9000860480 Hose set for rail stressor from version 8, emergency pressure relief at distributor block as standard
- 9000860485 Hose set for operating a second rail stressor
- 5088930003 Distribution block

#### Optional accessories:

Supports (for installation independent of clearance gauge for various rail profiles)

- 8747900004 90RE, 136RE, 140RE, BV50
- 8747900005 115RE, 119RE, 132RE
- 8747900008 60E1, 49E1, 54E3, AS47, AS50, AS53, AS60, R65, UNI60, 50E4

Supports for other rail profiles on request.

- 8748100008 Lifting beam
- 8749910007 Piston rod guard  
(for standard aluminium cylinder 380 mm)
- 8748960300 Transport box

#### Accessories for version with hollow piston cylinder:

- 8741850009 Drawbar 1.6 m
- 8741850007 Drawbar 2.0 m
- 8741850260 Drawbar 3.0 m
- 9001300269 Connecting sleeve



Lifting beam – 8748100008



Rail supports for use independent of clearance gauge



Piston rod guard for standard version with aluminium cylinder